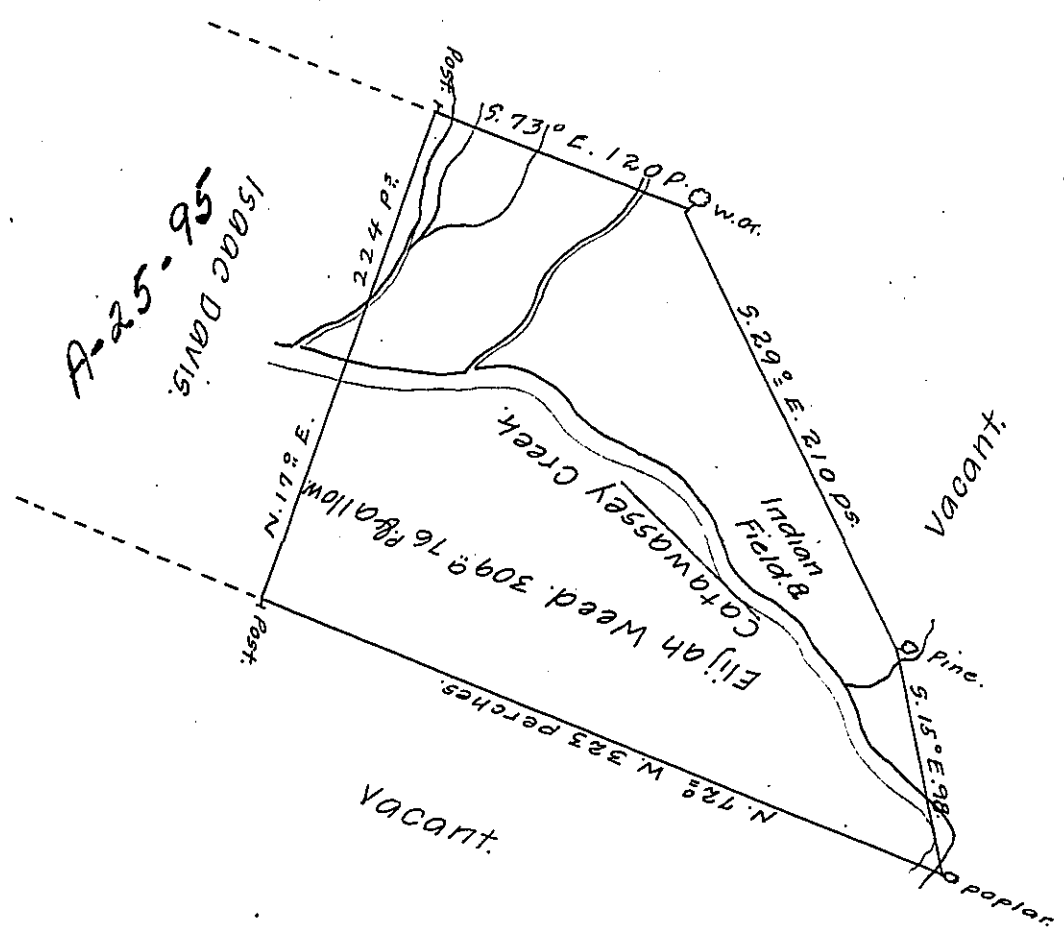


FORM No 1.



A Draught of a Tract of Land called — situate on both sides of Catawessey Creek including an Old Indian Field about fifteen miles from the Mouth of said Creek in the County of Northumberland containing three hundred and Nine Acres & Twenty six perches besides the usual allowance of 6 ¹/₂ Cent for Roads & Co. Surveyed the 18th day of May 1773 for Elijah Weed In Pursuance of a Warrant Dated the 21st day of January 1773.

Chas Stewart, Dep. Sur.

To John Lukens Esq^r
Survey^r Genl.

IN TESTIMONY that the above is a copy of the original remaining on file in the Department of Internal Affairs of Pennsylvania, made conformably to an Act of Assembly approved the 16th day of February, 1833, I have hereunto set my Hand and caused the Seal of said Department to be affixed at Harrisburg, this twentieth day of June, 1907.

Henry Houch
Secretary of Internal Affairs.